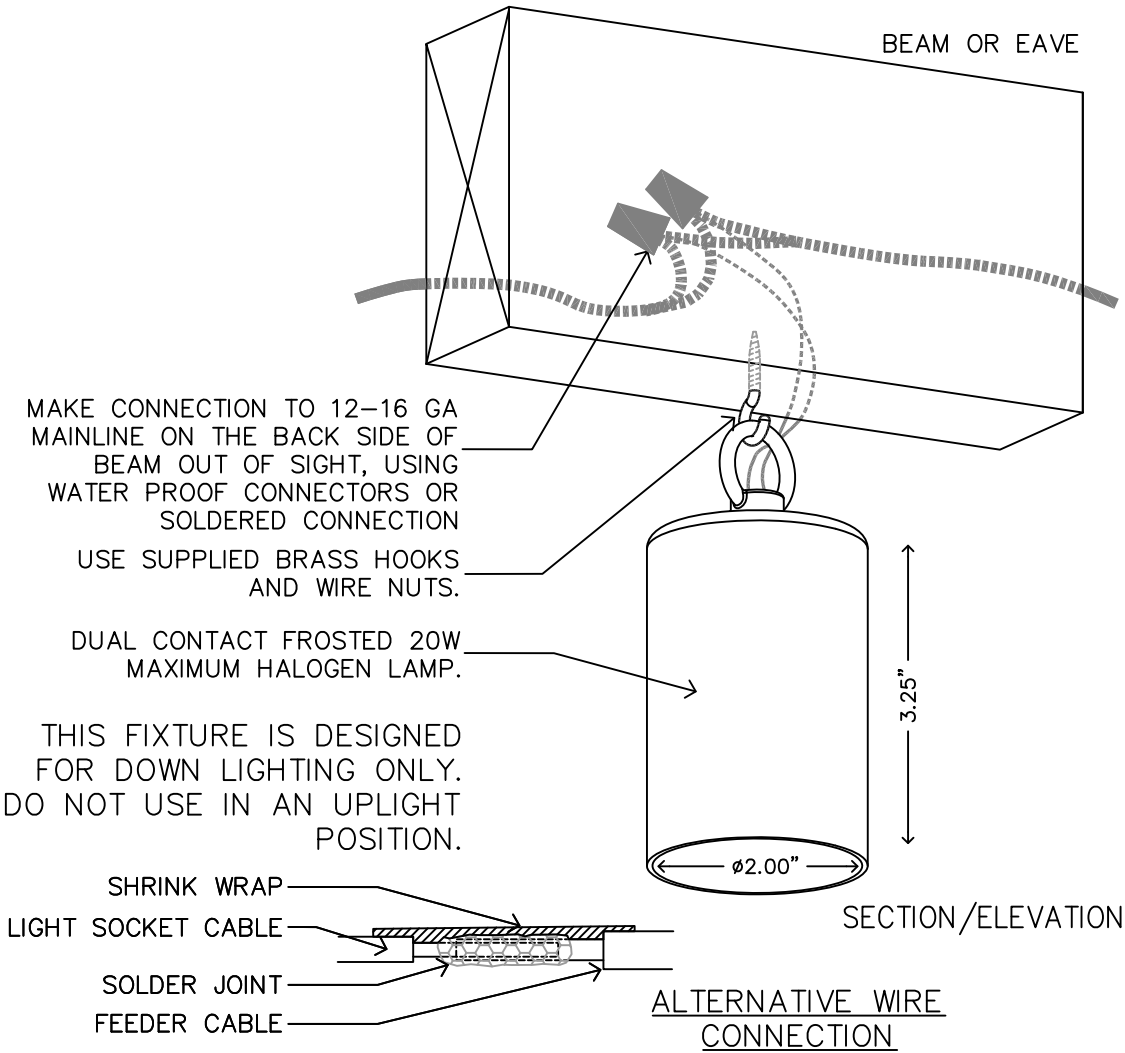


FX LUMINAIRE VITA LUME
HANG WITH HOOK SCREWED INTO
BEAM OR EAVE.



XX VITA LUME(VL)
BEAM MOUNT

NOT TO SCALE

FX LUMINAIRE DETAIL

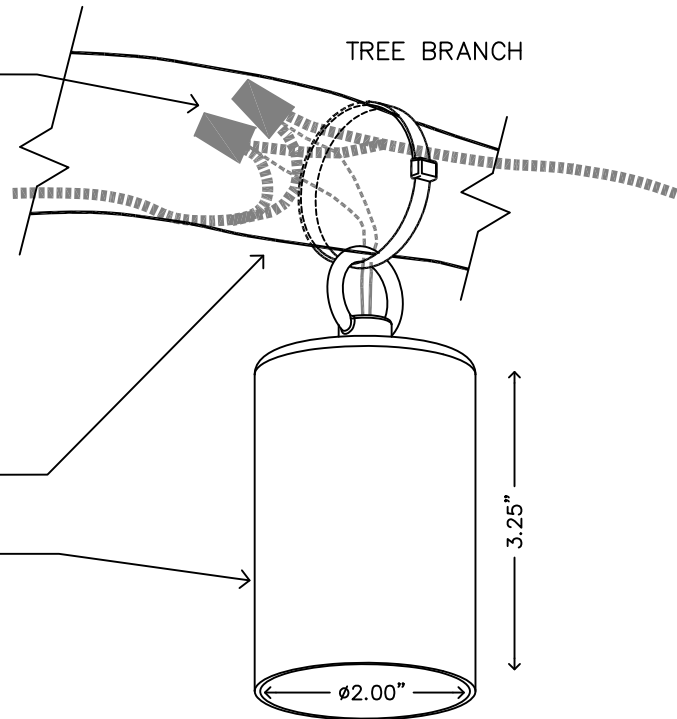
FX LUMINAIRE VITA LUME HANG
WITH CABLE TIE. CINCH CABLE
SO IT IS LOOSE TO ALLOW TREE
GROWTH. REPLACE CABLE TIE
EACH TIME LAMP IS REPLACED.

MAKE CONNECTION TO 12-16 GA
MAINLINE ON THE BACK SIDE OF
BRANCH OUT OF SIGHT, USING
WATER PROOF CONNECTORS OR
SOLDERED CONNECTION.

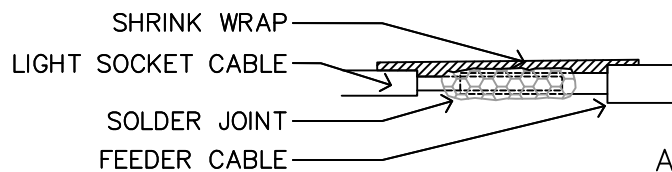
USE SUPPLIED CABLE TIES
AND WIRE NUTS.

DUAL CONTACT FROSTED 20W
MAXIMUM HALOGEN LAMP.

THIS FIXTURE IS DESIGNED
FOR DOWN LIGHTING ONLY.
DO NOT USE IN AN UPLIGHT
POSITION.



SECTION/ELEVATION



ALTERNATIVE WIRE
CONNECTION

XX VITA LUME(VL)
BRANCH MOUNT

NOT TO SCALE

FX LUMINAIRE DETAIL