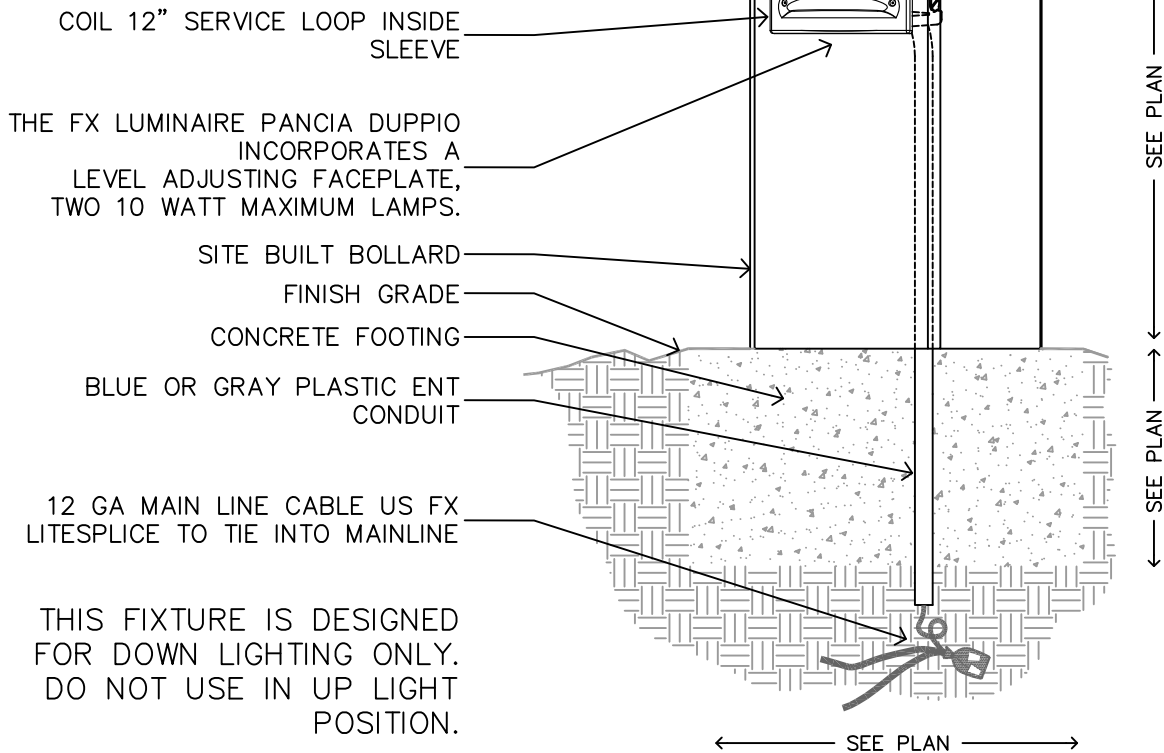


THE FX LUMINAIRE PANCIA
DUPPIO WITH THE BOLLARD
MOUNT IS PERFECT FOR
COMMERCIAL TURF OR RESORT
APPLICATIONS WHERE A GLARE
FREE, LOW MAINTENANCE
PATHLITE IS DESIRED. TIE
BOLLARD STYLE DESIGN INTO
THE SURROUNDING
ARCHITECTURE.



SECTION/ELEVATION

XX PANCIA DUPPIO(PD)
BOLLARD MOUNT

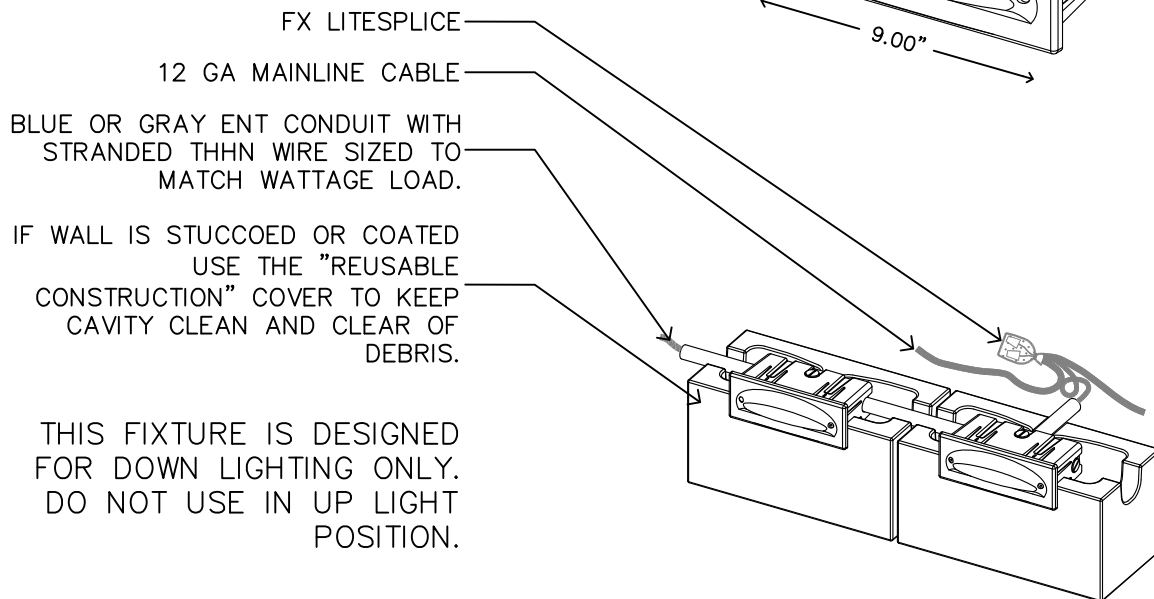
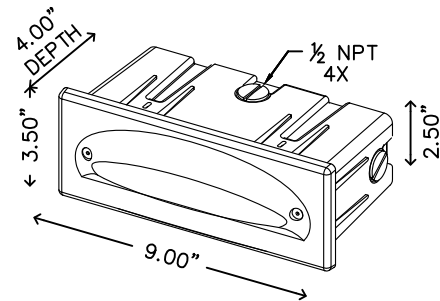
NOT TO SCALE

FX LUMINAIRE DETAIL

THE FX PANCIA DUPPIO IN ANY
HORIZONTAL MOUNTING
APPLICATION WITH SUPPLIED
HARDWARE.

THE FX LUMINAIRE PANCIA DUPPIO
INCORPORATES A LEVEL
ADJUSTING FACEPLATE, TWO 10
WATT MAXIMUM LAMPS.

WATERPROOF SLEEVE END TO
PREVENT WATER FROM SEEPING
THROUGH THE WALL INTO THE
LAMP HOUSING. LEAVE 12"
SERVICE LOOP COILED INSIDE THE
SLEEVE.



SECTION/ELEVATION

XX PANCIA DUPPIO(PD) CONCRETE WALL MOUNT

NOT TO SCALE

FX LUMINAIRE DETAIL

THE FX LUMINAIRE PANCIA
DUPPIO USING SUPPLIED
HARDWARE. MOUNT 8"–12" OFF
FINISHED GRADE.

THE FX LUMINAIRE PANCIA DUPPIO
INCORPORATES A LEVEL
ADJUSTING FACEPLATE, TWO 10
WATT MAXIMUM LAMPS.

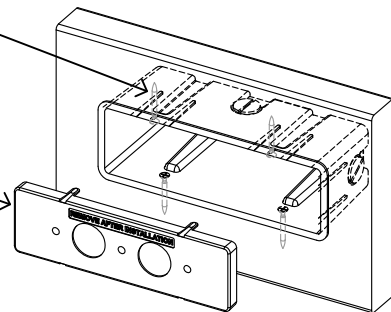
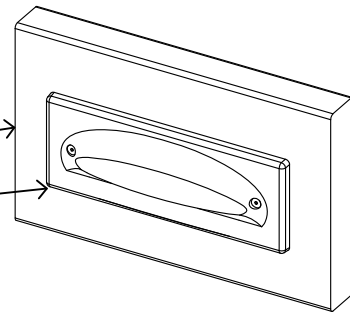
WOODEN WALL

COIL 12" SERVICE LOOP INSIDE
SLEEVE.

CUT A 4.625" X 2.75" REC HOLE
THRU THE WOOD WALL TO MOUNT
FX LUMINAIRE PANCIA DUPPIO.
MOUNT SLEEVE IN PLACE USING
1" #6 GALVANIZED DECK SCREWS.

IF WALL IS STUCCOED OR COATED
USE THE "REUSABLE
CONSTRUCTION" COVER TO KEEP
CAVITY CLEAN AND CLEAR OF
DEBRIS.

THIS FIXTURE IS DESIGNED
FOR DOWN LIGHTING ONLY.
DO NOT USE IN UP LIGHT
POSITION.



SECTION/ELEVATION

XX PANCIA DUPPIO(PD)
WOOD WALL MOUNT
NOT TO SCALE FX LUMINAIRE DETAIL