

VS LED

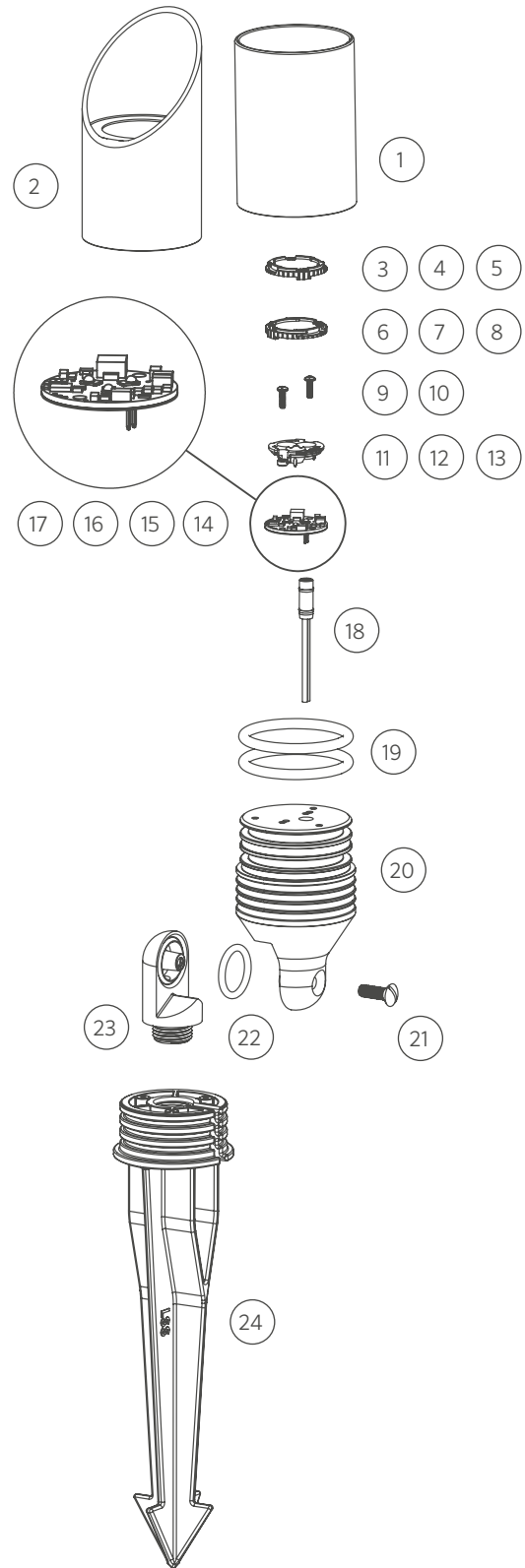
ITEM	DESCRIPTION	CATALOG #
1	Lens Cap Assembly (Straight, Clear)	VSLCXX*†
2	Lens Cap Assembly (Long Shroud, Clear)	VSLCLSXX*†
3-5	Diffuser	See LED chart
6-8	Color Filter	See LED chart
9-10	Screw, 4-40	See LED chart
11-13	Reflector	See LED chart
14-17	LED Board	See LED chart
18	Socket	752600
19	O-Ring	250010280020
20	Base	-
21	Screw, 1/4-20 x 3/4	250010630000
22	O-Ring	250010280005
23	Knuckle, Brass	250010610000
24	Large Slot Spike (LSS)	250015840000

* XX = finish code

† Replace "C" with "F" for frosted lens options

VS LED COMPONENTS

ITEM	DESCRIPTION	CATALOG #
3	1 LED Diffuser	770600
4	3 LED Diffuser	771300
5	6/9 LED Diffuser	771600
6	1 LED Color Filter, Amber	770100
6	1 LED Color Filter, Blue	770101
6	1 LED Color Filter, Green	770102
7	3 LED Color Filter, Amber	770800
7	3 LED Color Filter, Blue	770801
7	3 LED Color Filter, Green	770802
8	6/9 LED Color Filter, Amber	771500
8	6/9 LED Color Filter, Blue	771501
8	6/9 LED Color Filter, Green	771502
9	1/3 LED Screw, 4-40 x 3/8 (Qty: 2)	762400
10	6/9 LED Screw, 4-40 x 7/16 (Qty: 3)	250014550000
11	1 LED Reflector	770000
12	3 LED Reflector (ZDC)	770700 (250020690000)
13	6/9 LED Reflector	771400
14	1 LED Board	1LEDULKIT*
15	3 LED Board	3LEDULKIT* / ZDC3LEDKIT†



ITEM	DESCRIPTION	CATALOG #
16	6 LED Board	6LEDULKIT*
17	9 LED Board	9LEDULKIT*

* ZD = Zoneable & Dimmable (add ZD to front of part number)

† ZDC kit includes LED board, reflector (#12), screws (#10), and flood lens diffuser (9LEDFLENS)