

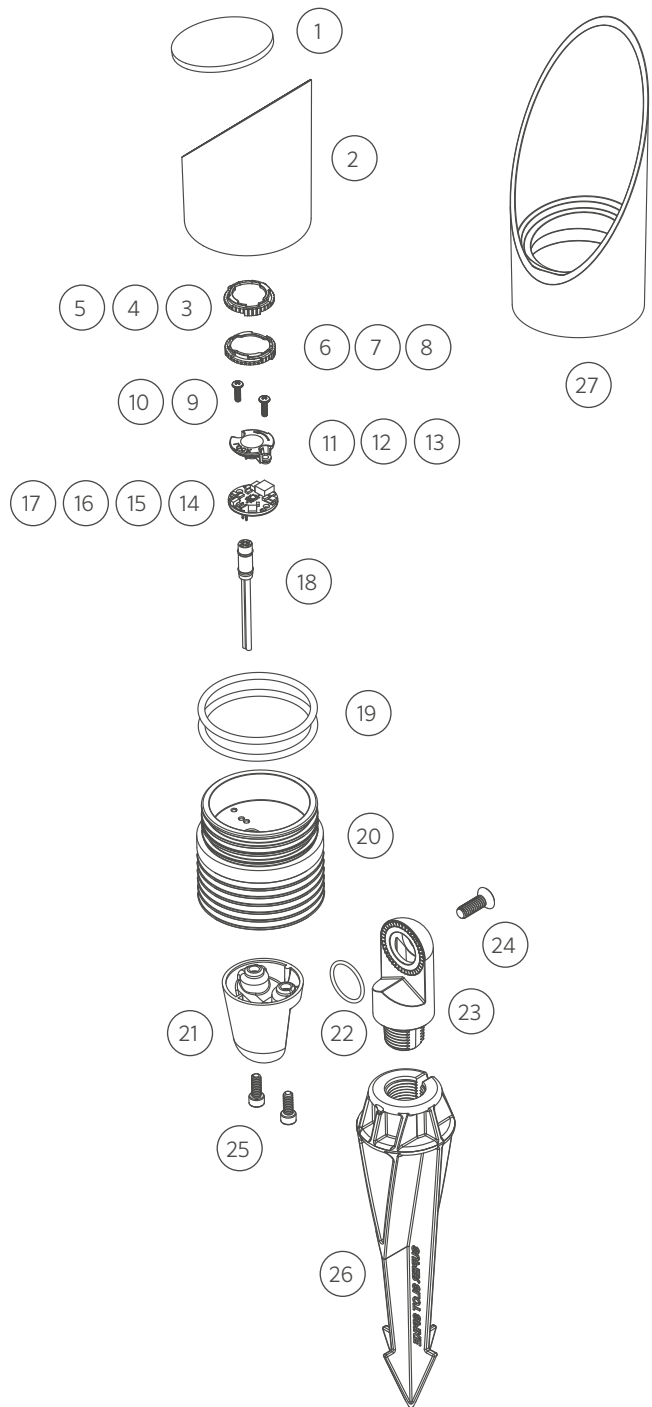
NP LED

ITEM	DESCRIPTION	CATALOG #
1	Lens	-
2	Shroud	-
3-5	Diffuser	See LED chart
6-8	Color Filter	See LED chart
9-10	Screw	See LED chart
11-13	Reflector	See LED chart
14-17	LED Board	See LED chart
18	Socket, 1.5-meter	752600
19	O-Ring	250010280025
20	Body	-
21	Base	-
22	O-Ring	250010280002
23	Knuckle Subassembly	KFM050XX*
24	Screw, 1/4-20 x 3/4	250010290000
25	Screw, 10-24 x 3/8	250013940000
26	Super Slot Spike	753900
27	Long Shroud	-
1-2	Lens Cap Assembly (Clear)	NPLCXX**†
1, 27	Long Shroud Lens Cap Assembly (Clear)	NPLCLSXX**†

* XX = powder coat color code
 † Replace "C" with "F" for frosted lens option

NP LED COMPONENTS

ITEM	DESCRIPTION	CATALOG #
3	1 LED Diffuser	770600
4	3 LED Diffuser	771300
5	6/9 LED Diffuser	771600
6	1 LED Color Filter, Amber	770100
6	1 LED Color Filter, Blue	770101
6	1 LED Color Filter, Green	770102
7	3 LED Color Filter, Amber	770800
7	3 LED Color Filter, Blue	770801
7	3 LED Color Filter, Green	770802
8	6/9 LED Color Filter, Amber	771500
8	6/9 LED Color Filter, Blue	771501
8	6/9 LED Color Filter, Green	771502
9	1/3 LED Screw, 4-40 x 3/8 (Qty: 2)	762400
10	6/9 LED Screw, 4-40 x 7/16 (Qty: 3)	250014550000



ITEM	DESCRIPTION	CATALOG #
11	1 LED Reflector	770000
12	3 LED Reflector (ZDC)	770700 (250020690000)
13	6/9 LED Reflector	771400
14	1 LED Board	1LEDULKIT*
15	3 LED Board	3LEDULKIT* / ZDC3LEDKIT†
16	6 LED Board	6LEDULKIT*
17	9 LED Board	9LEDULKIT*

* ZD = Zoneable & Dimmable (add ZD to front of part number)
 † ZDC kit includes LED board, reflector (#12), screws (#10), and flood lens diffuser (9LEDFLLENS)